

LR Series

Low Frequency, Focused, Elastomer Shock & Vibration Isolation Mounts

Features/Benefits

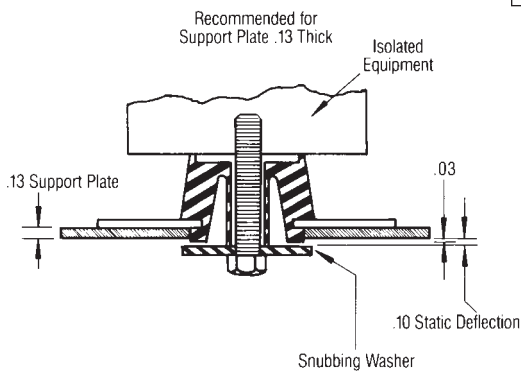
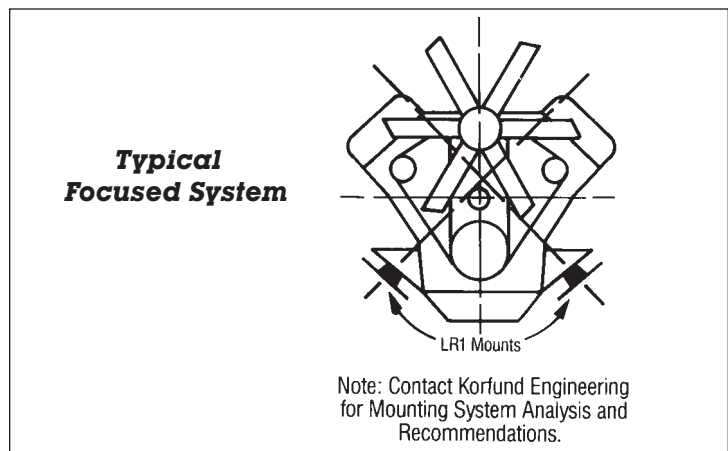
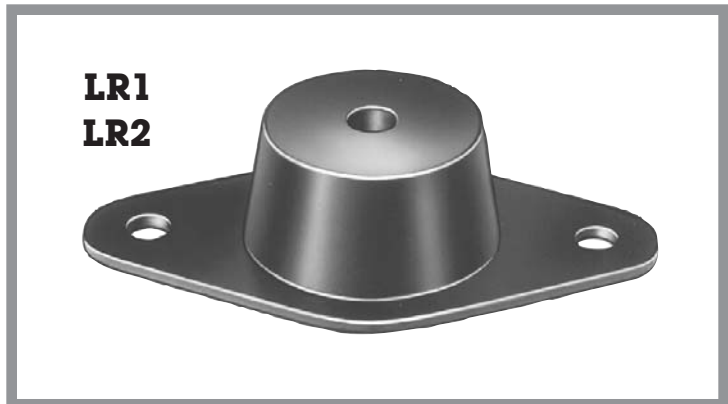
- Static Load Range 20 to 400 lbs.
- Low Profile
- Fail-safe design with snubbing washer
- Axial to radial stiffness – approximately 6:1
- Can be focused to decouple system

Construction/Material Data

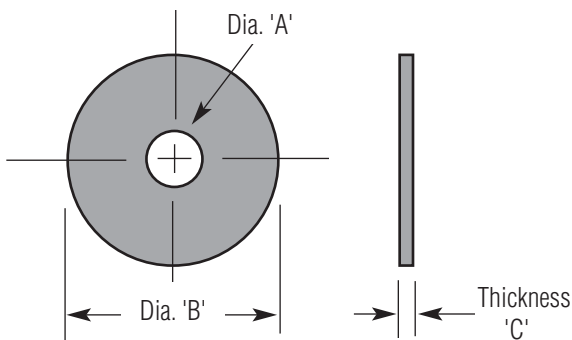
- Structural sections – carbon steel
- Rust-resistant coating on metal surfaces
- Neoprene Elastomer
 - Resists oils, ozone and most solvents
 - Operating temperature range (-20°F to +180°F)
 - Damping ratio $C/C_C = .10$ (transmissibility approx. 5:1 at resonance)

Applications

- Small/medium diesel or gas engines
- Motor generators and compressors
- Pumps and centrifuges
- Fans and blowers
- Portable equipment and machinery



Typical Installation Configuration



LR Series Snubbing Washers*Dimensions

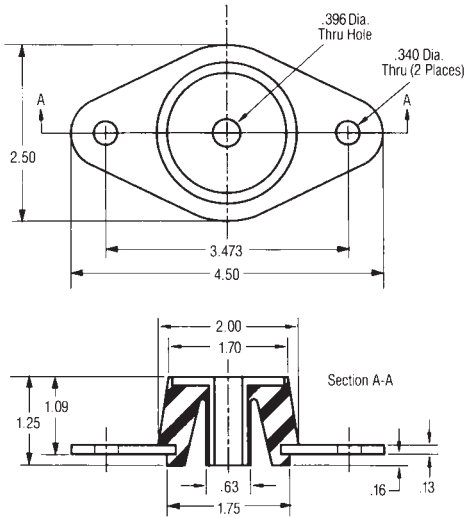
	Dia. 'A'	Dia. 'B'	Thickness 'C'	Part No.
LR1	.45	2.00	.13	148099-5
LR2	.64	2.25	.15	148099-6

* Zinc Plated Carbon Steel

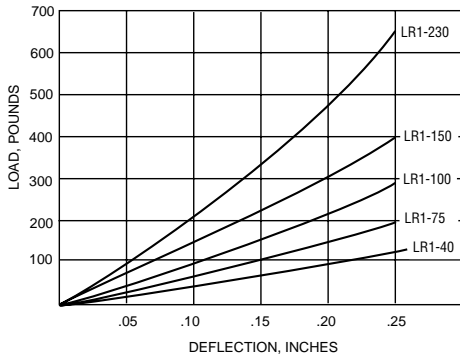


LR1 Series

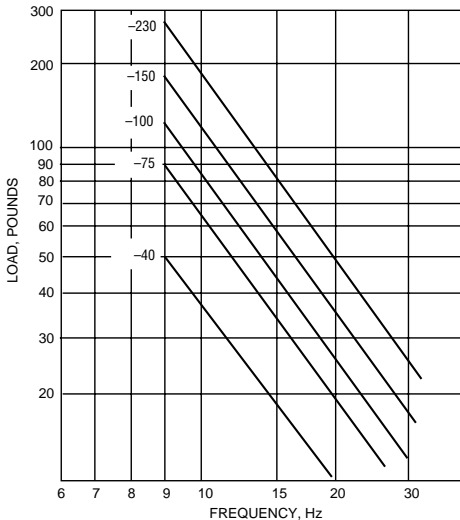
Part Number	Static Load Nominal lbs.
LR1-40	40
LR1-75	75
LR1-100	100
LR1-150	150
LR1-230	230



AXIAL LOAD Vs. DEFLECTION

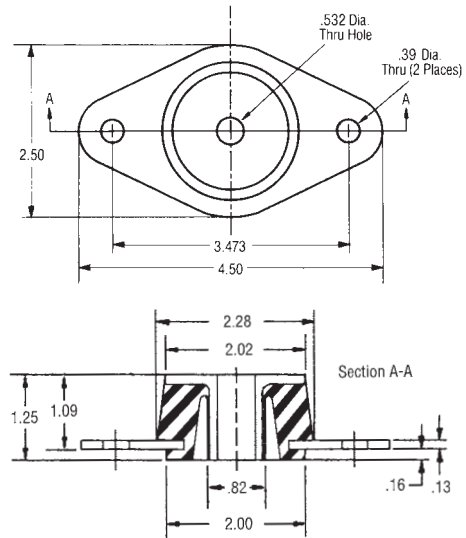


AXIAL LOAD Vs. FREQUENCY

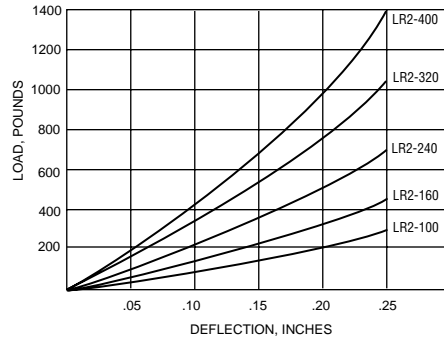


LR2 Series

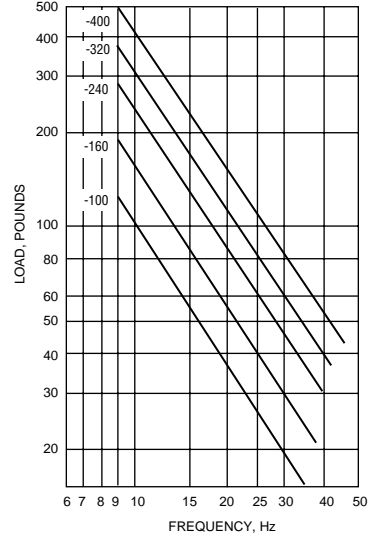
Part Number	Static Load Nominal lbs.
LR2-100	100
LR2-160	160
LR2-240	240
LR2-320	320
LR2-400	400



AXIAL LOAD Vs. DEFLECTION



AXIAL LOAD Vs. FREQUENCY



DFA Sales
www.Korfund.com
info@Korfund.com

KORFUND DYNAMICS